

ELECTRIC FIREPLACES AND FIREPLACE'S REAL FLAME EFFECT

Are you dreaming of a fireplace ? Your dream may come true!

You don't have to spend a lot of money and you can have it even if you live in an apartment building.



If you already own a traditional fireplace - how many times a year you use it? Ten times or, perhaps, less?

Most of the time it is "dead".

We can revive your fireplace! It shall heat, cool, create a special atmosphere, whether it is a warm summer night or a freezing winter day. Special effects of fame shall give you an impression of a real fireplace with burning wood.

The electric fireplace is easy to handle, it is just a "click and it works". It's advantage is that when burning it doesn't draw in the air from the room, unlike traditional fireplaces.

Electric fireplaces may be used in apartments, halls, restaurants, clubs, hotels etc.

The ones we offer can be used in standard fireplaces, giving the effect of flickering flame as well as a free-standing floor unit.

In case you do not have a traditional fireplace, **ZPUG IZOTERMA** offers electric fireplace with a prefabricated wooden or marble mantle. The encased fireplace can be placed against the wall without disarrangement of the wall structure.

At the client's request we can provide a fireplace suitable to be built in the wall. Alongside their practical functions, our fireplaces are an ornament of the room, giving it a sparkle of elegance and beauty.



ELECTRIC FIREPLACES



Version C1

Height - 640
Width - 520
Depth - 200
Light - 2 x 40W
Wattage - 2 kW
Weight - 17 kg



Version D1 + C1

Height - 736
Width - 735
Depth - 330
Light - 2 x 40W
Wattage - 2 kW
Weight - 40 kg



Version D2 + C1

Height - 1104
Width - 1260
Depth - 400
Light - 2 x 40W
Wattage - 2 kW
Weight - 56 kg



Version D3 + C1

Height - 1104
Width - 1140
Depth - 360
Light - 2 x 40W
Wattage - 2 kW
Weight - 52 kg



Version D4 + C1

Height - 1220
Width - 1375
Depth - 385
Light - 2 x 40W
Wattage - 2 kW
Weight - 64 kg



Version D5 + C1

Height - 1225
Width - 1470
Depth - 440
Light - 2 x 40W
Wattage - 2 kW
Weight - 108 kg

Dimension in mm

FIREPLACE'S REAL FLAME EFFECT



ver. A1

Ver. A1 230 V	kW	Light W	Dimension			Weight kg	Application
			H	W	D		
1	-	40	193	355	215	3,0	floor, fireplace
2	2	40	270	355	260	5,0	floor, fireplace



ver. A2

Ver. A2 230 V	kW	Light W	Dimension			Weight kg	Model	Application
			H	W	D			
1	-	40	210	540	250	3,1	without trellis	floor, fireplace
2	-	40	250	575	275	4,2	with trellis	floor, fireplace
3	2	40	350	575	275	6,6	with trellis and heating panel	floor, fireplace



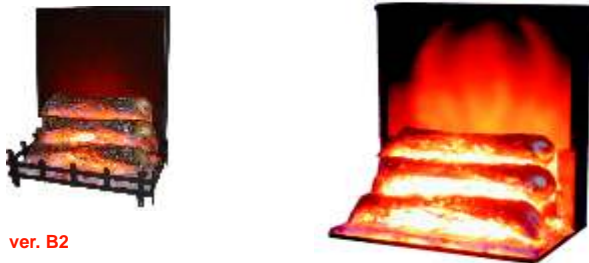
ver. A3

Ver. A3 230 V	kW	Light W	Dimension			Weight kg	Model	Application
			H	W	D			
1	-	40	310	620	295	5,0	without trellis	floor, fireplace
2	-	40	350	650	320	6,3	with trellis	floor, fireplace
3	2	40	450	650	320	8,7	with trellis and heating panel	floor, fireplace



ver. B1

Ver. B1 230 V	kW	Light W	Dimension			Weight kg	Model	Application
			H	W	D			
1	-	2x40	440	545	220	7,0	without trellis	floor, fireplace
2	-	2x40	475	575	275	8,2	with trellis	floor, fireplace
3	2	2x40	575	575	275	10,6	with trellis and heating panel	floor, fireplace



ver. B2

Ver. B2 230 V	kW	Light W	Dimension			Weight kg	Model	Application
			H	W	D			
1	-	2x40	525	450	310	7,8	without trellis	floor, fireplace
2	-	2x40	560	485	335	8,9	with trellis	floor, fireplace
3	2	2x40	660	485	335	11,4	with trellis and heating panel	floor, fireplace



ver. B3

Ver. B3 230 V	kW	Light W	Dimension			Weight kg	Model	Application
			H	W	D			
1	-	2x40	690	680	345	12,7	without trellis	floor, fireplace
2	-	2x40	725	715	370	14,1	with trellis	floor, fireplace
3	2	2x40	825	715	370	16,5	with trellis and heating panel	floor, fireplace



ver. B1-10a



ver. B1-10b



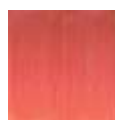
ver. B1-10c

Ver B1-10 230 V	kW	Light W	Dimension			Weight kg	Comments
			H	W	D		
B1-10 a	-	2x40	730	820	230	13,7	
B1-10 b	2,0	2x40	760	860	270	16,5	
B1-10 c-p.1	2,0	2x40	620	630	270	13,1	opening for wall mounting H=585 L=600
B1-10 c-p.2	-	2x40	535	630	230	11,1	opening for wall mounting H=480 L=600

MANTEL COLOURS - VER. D



jesion polarny



d b jasny



orzech ciemny



jablo lokarno



maho jasny



maho togo (ciemny)